

Development phase - 2nd

25

♩ : 92

Reibestock on the sides of tam-tam
(or a gong- or large cymbal whatever we decide)
as a fast brutal attack and dampen it right after it.

17

sim. ϕ

marimba mallets, tam- tam

rall. ----- ♩ : 66 atempo tam- tam , similar action, change the position on the instrument.

rall. ----- ♩ : 66

ord.-.....s.t. \blacksquare ----- \square light noise \blacksquare ----- \square sim. \blacksquare ----- \square 8va- a.s.t. \square co 5 =

Perc. H 3 4 ffz 3 f sfz p f sfz ppp

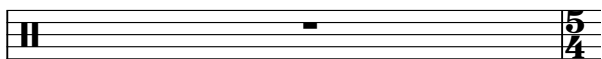
Vln. 3 gliss. sfz p sfz p sfz gliss. sfz ppp

Vc. 3 gliss. ffz p f sfz p f sfz ppp

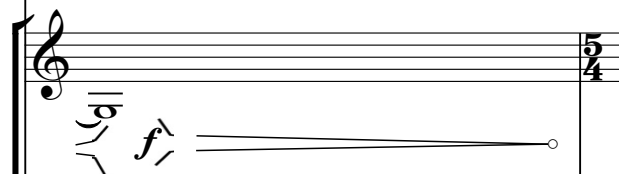
Db. 3 gliss. ffz p f sfz p f sfz ppp

ord.-.....s.t. \blacksquare ----- \square sim. \blacksquare ----- \square rall. ----- ♩ : 66 atempo rall. ----- ♩ : 66

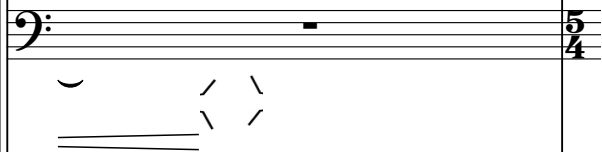
Perc.



Vln.



Vc.



Db.

